

Please ensure you have received all the correct parts before installation. Mardeco International Ltd takes no responsibility for incorrect product being fitted.

Mardeco International Ltd retains the right to change products and specifications without notice.

Copyright © 2012 Mardeco International Ltd. All rights reserved. For full Terms & Conditions please visit our website.

Mardeco International Ltd.  
PO Box 131

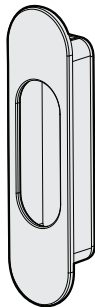
Whangaparaoa 0943  
Auckland, New Zealand  
Phone: +64 (0) 9 428 0658  
Email: [info@mardeco.co.nz](mailto:info@mardeco.co.nz)  
Web: [www.mardeco.co.nz](http://www.mardeco.co.nz)

**mardeco**<sup>®</sup>  
international ltd  
*we handle the best*



Scan QR code to  
view a step by step  
installation video

### Contents Inside Package



x1



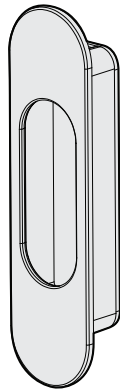
x2  
No. 6  
3/4

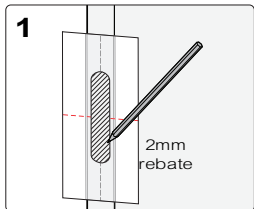


x2



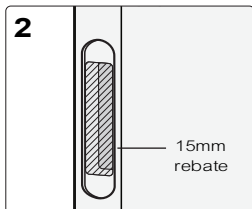
## 9001 End Pull Installation Instructions





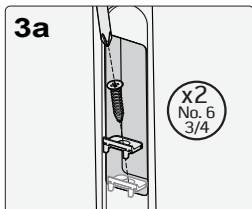
**1**

Remove middle section of template and mark rebate outline on end of door. Use midline as height reference. Cut 2mm rebate.



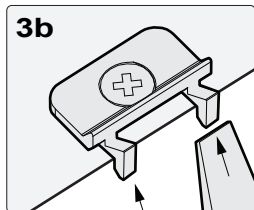
**2**

Place middle section of template into rebate and mark 2nd rebate outline. Ensure it is the correct way up. Cut 15mm rebate



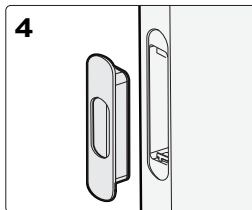
**3a**

For wooden doors: install two woodfix brackets at top and bottom of 2nd rebate.



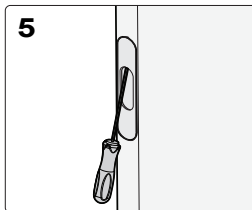
**3b**

Fix bracket in centre of the cutout, ensuring that the tabs are hanging off the lip of the cutout. Once screw is fitted, snap off positioning tabs.



**4**

Insert end pull into cavity. Push in and down so it grips onto the bottom bracket or edge.



**5**

Use Mardeco hex tool to tighten grub screw inside top of end pull. Ensure end pull is fitted firmly.

