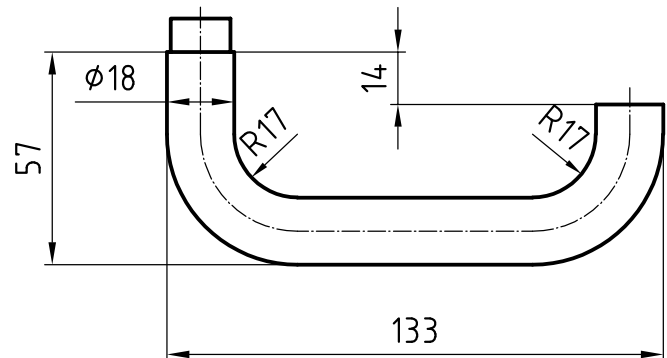


## 5099 Helsinki Stainless steel lever handle



Picture shows handle with 5620C rose

### Product profile

Residential construction

### Standard version

Satin stainless steel surface

Lever handle length 133 mm, Ø 18 mm

Projection 57 mm

Prepared for fixed mobile mounting with easyfix

Steel galvanised square spindle

16-mm Glutz glide bearing, tested for 2.5 million cycles

### Important note

To achieve usage class 4 in accordance with EN 1906, a 9-mm steel or 8-mm stainless steel square spindle is needed

Approved with corresponding panic lock as emergency exit lever handle in accordance with EN 179

### 5099 · ① · ② · ③ · ④ · ⑤ · ⑥

① Execution	② Guide	③ Spindle	④ Bolt length	⑤ Spindle material	⑥ Surface
00 Lochteil	0 glide	80 8 mm	00 Without	0 Without	00 Stainless steel matt
10 Stifftteil		85 8,5 mm	01 72 mm	1 Galvanized steel	11 Stainless steel polished
50 Paar		90 9 mm	08 89 mm	2 Stainless steel	44 Antibacterial
			12 109 mm		51 RAL 9005 black matt
			99 Auf Anfrage		99 On request