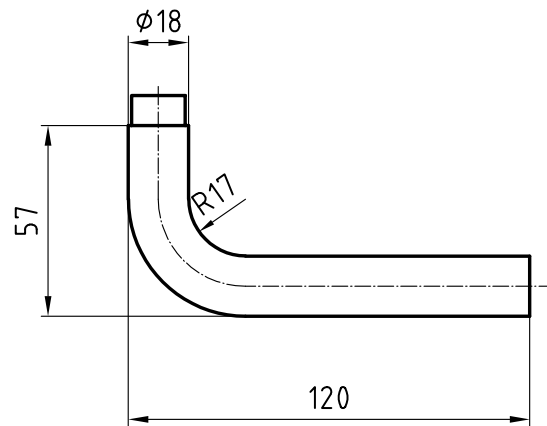


## 5070 Berne Stainless steel lever handle



Picture shows handle with 5620C rose

### Product profile

Residential construction

### Standard version

Lever handle Length: 120 mm, Ø 18 mm

Projection: 57 mm

Square spindle 8 mm

Satin stainless steel

16 m guide for Glutz glide / easyfix

### Options

Polished stainless steel

RAL lacquered

PVD lacquered

Square spindle 8,5 mm or 9 mm

Category of use class 4, EN 1906: 2002-05

### 5070 · ① · ② · ③ · ④ · ⑤ · ⑥

① Execution	② Guide	③ Spindle	④ Bolt length	⑤ Spindle material	⑥ Surface
00 Lochteil	0 glide	80 8 mm	00 Without	0 Without	00 Stainless steel matt
10 Stifftteil		85 8,5 mm	01 72 mm	1 Galvanized steel	11 Stainless steel polished
50 Paar		90 9 mm	08 89 mm	2 Stainless steel	44 Antibacterial
			12 109 mm		51 RAL 9005 black matt
			99 Auf Anfrage		99 On request