



DR200V

solid front door knob fixed on rose

Product information

Code: 3902K001INXX0

Finish: satin stainless steel

UNIT: Piece

Collection: ECLIPSE

Designer: David Rockwell

EAN code: 8718009410479

ECLIPSE by David Rockwell

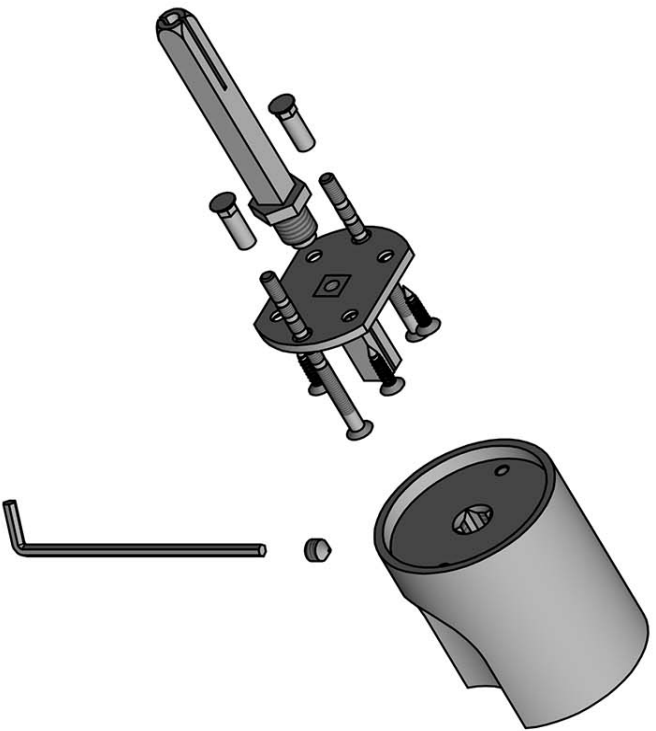
The ECLIPSE series is a total concept collection consisting of door, window, and furniture fittings.

Finishes

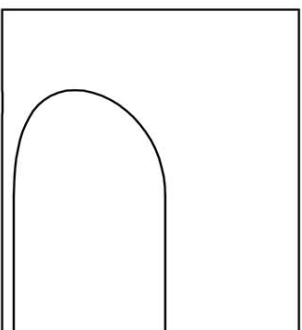
- satin stainless steel
- bronze
- PVD satin gold
- PVD satin black

ECLIPSE DR200V

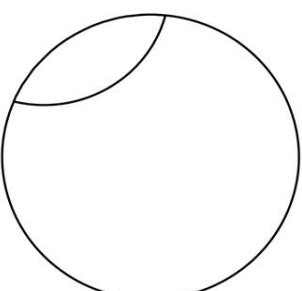
solid front door knob
stainless steel



52



60



38

<p>FORMANI®</p> <p>FORMANI HOLLAND B.V. EUROPEAN HANT 2 6199 AB MAASTRICHT-AIRPORT NL T +31 (0)43 308 90 00 INFO@FORMANI.COM WWW.FORMANI.COM</p>		Type :	Version:
<p>Formani filename: 3902K001_DR200V_V01.dwg</p>		ECLIPSE DR200V	
<p>Drawn by: Christian Birinbois</p>		Description: solid front door knob stainless steel	Format A3
<p>Creation date: 30-11-2020</p>			

ECLIPSE

by David Rockwell

Simplicity meets innovation in ECLIPSE by David Rockwell. The iconic silhouette is a cylindrical form with a curved, carved channel—an inflection point that perfectly meets the hand's grasp. Simple, sculptural tooling offers both a square and round return option for a distinctive profile. The sublime finish creates soft lines that ensure a perfect ergonomic grip. The door handle is manufactured as one piece, allowing the moon-like detailing to continue seamlessly along the entire length of the arm and over the curve to the start of the neck.

ECLIPSE

by David Rockwell



FORMANI®



David Rockwell

New York, USA, 1956

Design philosophy: It's about observing a situation - a process, object or place - and believing it can better.

Formani and David Rockwell have established their first design collaboration, which resulted in the 'Eclipse' hardware collection. 'We approached our design concept like we would for an interactive set piece on stage—transforming something everyday into a special object that marks a transition and transformation in a wide range of interiors,' said David Rockwell, founder and President, Rockwell Group. "With an inflection point that responds to the human touch, Eclipse is a pleasure to use as well as observe."

Brand story

FORMANI has evolved considerably over the last few decades – from a Dutch family business to an internationally renowned designer brand, from door handles to total design concepts, from product development to collaborations with world-class designers. It was an evolution driven by pure ambition and courage. Our motto, ‘Obsessed with details’, epitomizes everything we do, from product to process, from strategy to service. Because it is these details that make the difference between good and perfect. At FORMANI, good is the enemy of great.

Formani Holland b.v.
Europalaan 12
6199 AB
Maastricht-Airport

T: +31(0)43 308 9000
E: info@formani.com

Chamber of Commerce:
146 27 479

FORMANI®